

http://psredit.com/psredit500/index.html

PSREdit500 - Configuration ... X

File Edit View Favorites Tools Help

Google psredit500 Search Share psredit500 More >>

Page Safety Tools

AA Amazon Banks Bills Dict-R DMR Maps NASCAR Sched RS Scanners RRDB Rx Whistler Wx Yelp-Keller Infrequent Gov't

PSREdit500 version 1.93 Release 13 (September 2, 2016)

Screen Shots

Program Features

Download

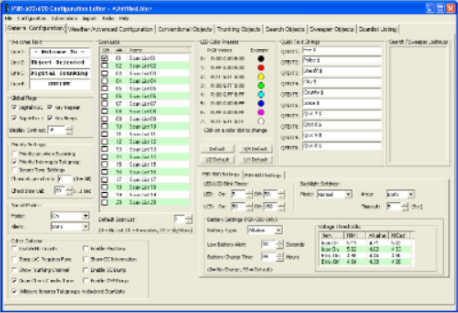
Purchase License

Frequently Asked Questions

Lost Key Recovery

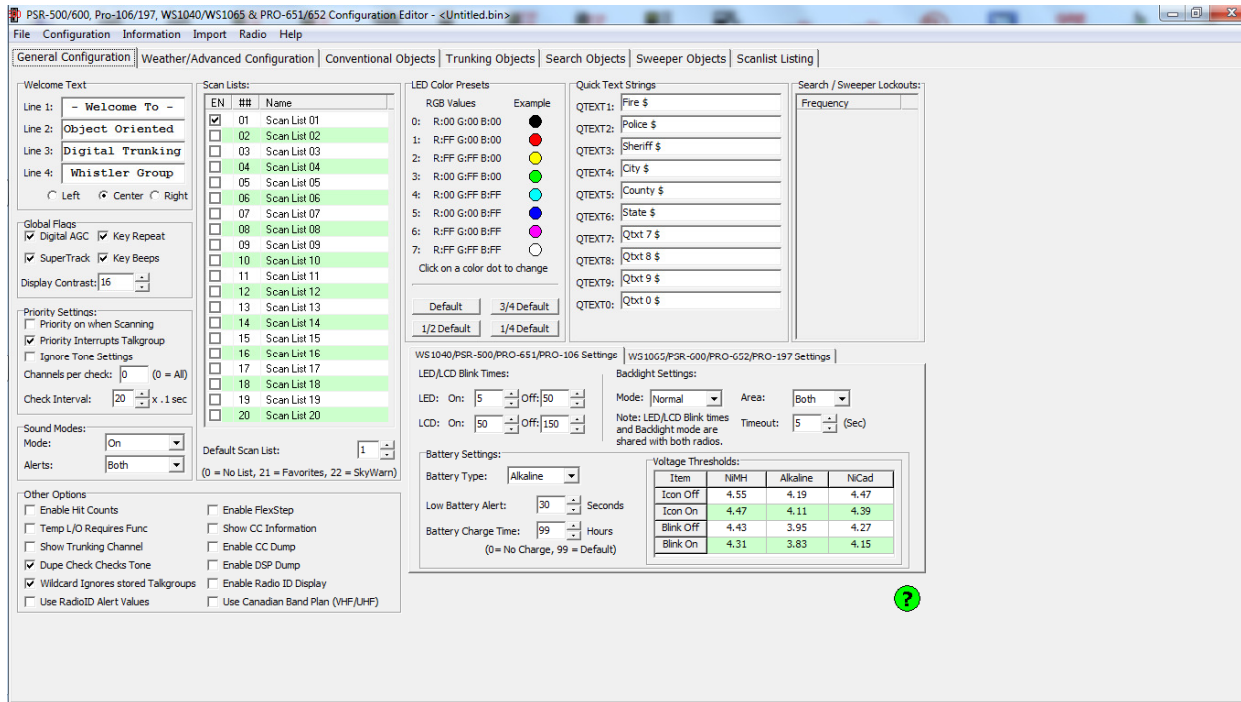
Join Yahoo! Group

Join PSREdit500 Group

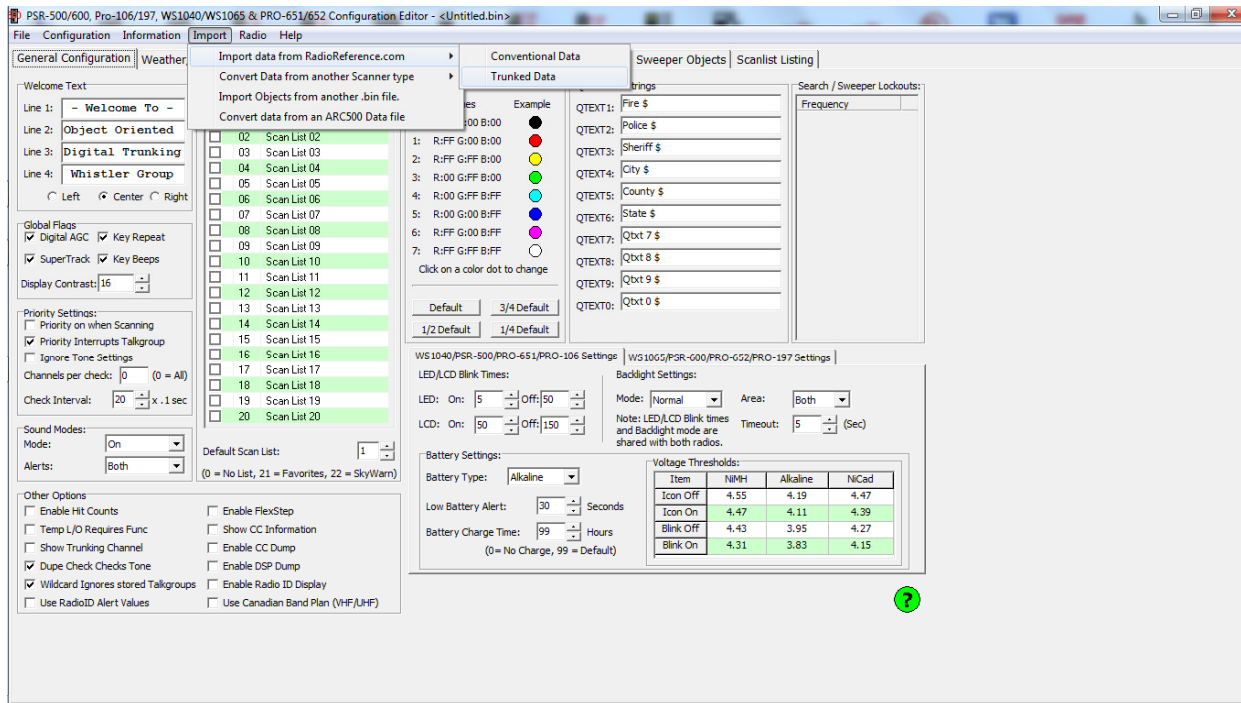


PSREdit500 allows you to program all the features of the following scanner models:

PSREdit500 can be downloaded from www.psredit.com. You can use this program free for 30 days. Click on the Download button. When you get to the download page, click on Setup executable format and follow the prompts. **(Note: Release date and version number may change)**

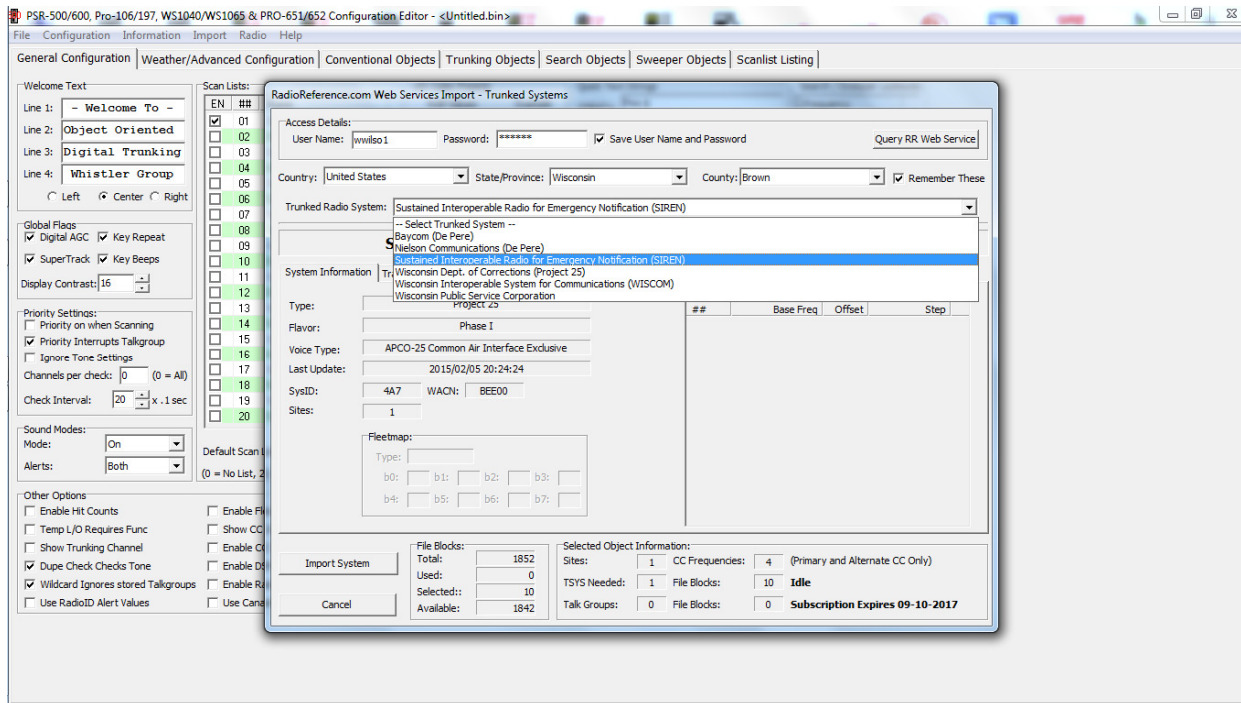


Launch the PSREdit500 software. Expand the program's window so you can see all of the options without scrolling.



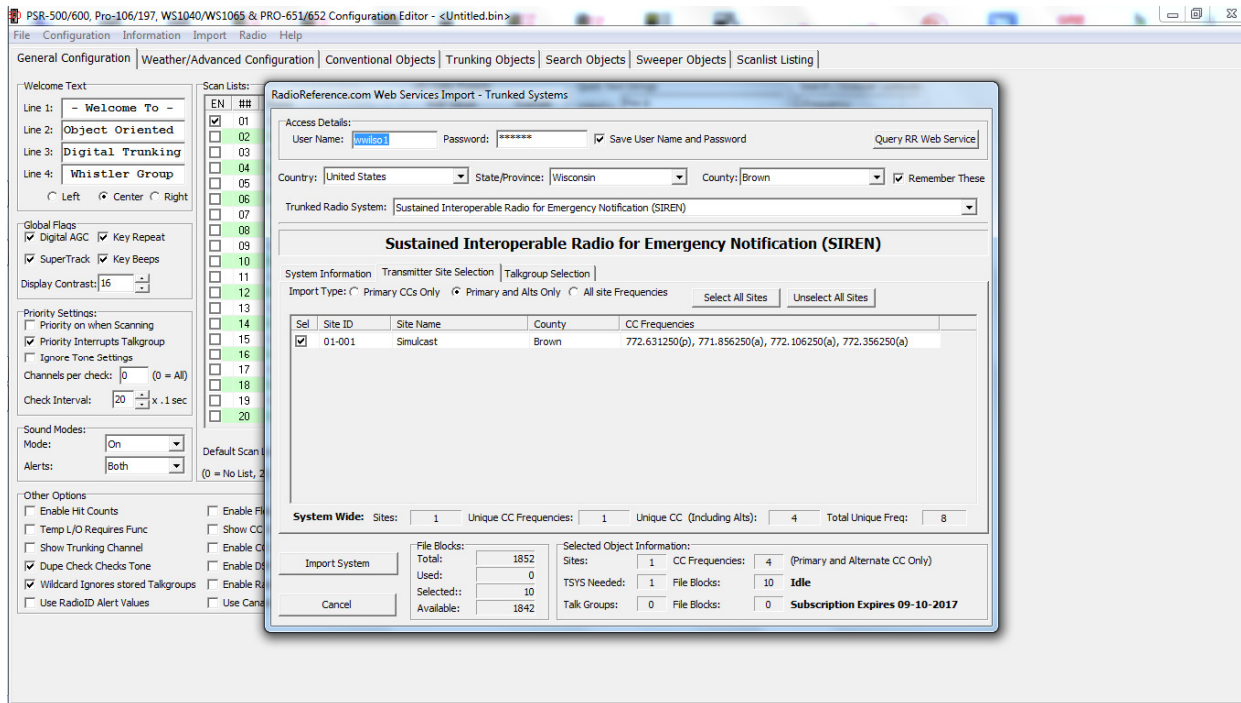
Click on Import, Import Data from Radioreference.com, Trunked Data (or Conventional Data)

Note: Premium Membership to RadioReference.com is required.

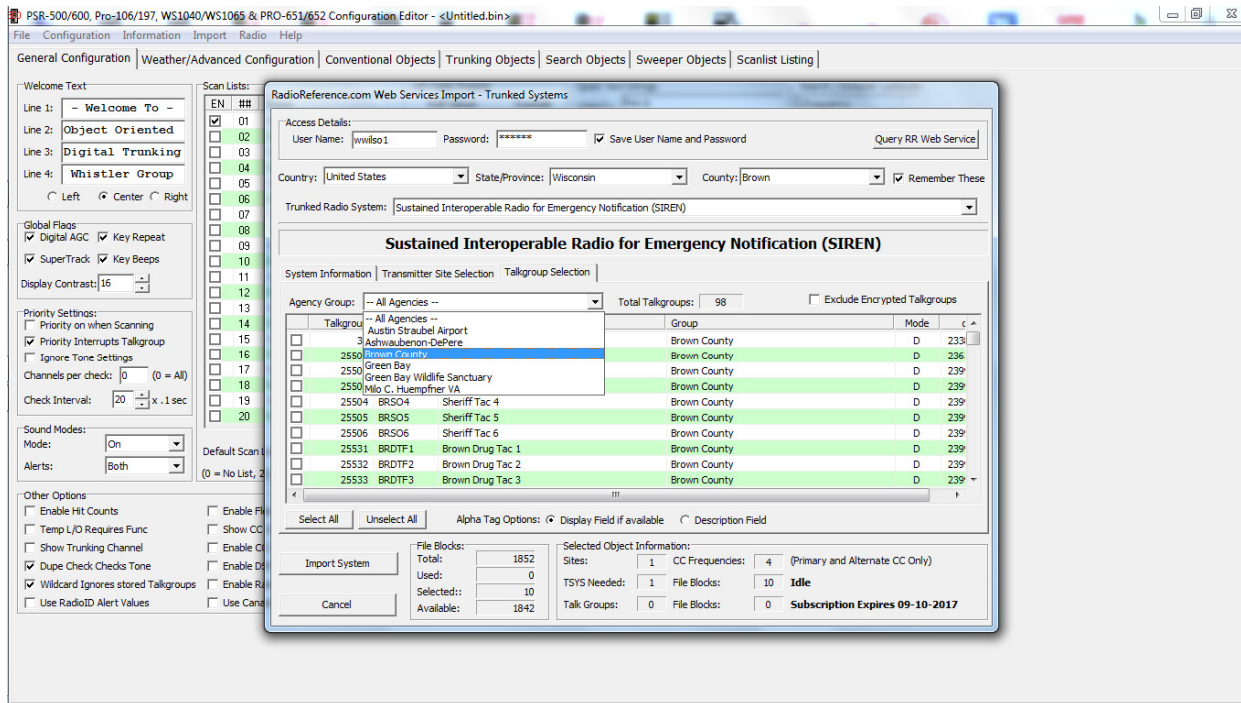


Enter your radioreference.com ID and password, check the box to Save your ID and password, then click on Query RR Web Service. Enter country, state and county, check the box to remember your location. Trunked Radio System box, click on the arrow to see the local trunked systems. Click on the system you need.

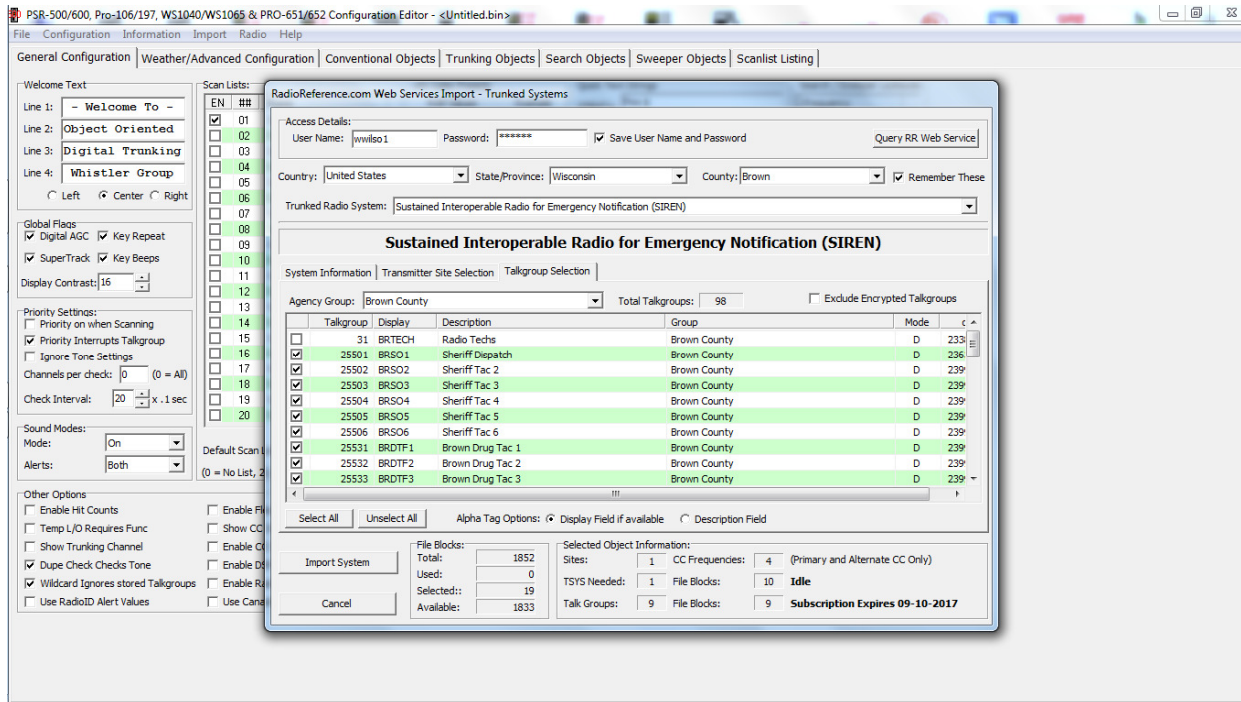
Note: A working example has been provided below so help you become familiar with the process. Once familiar, you will want to enter in systems that are of interest to you.



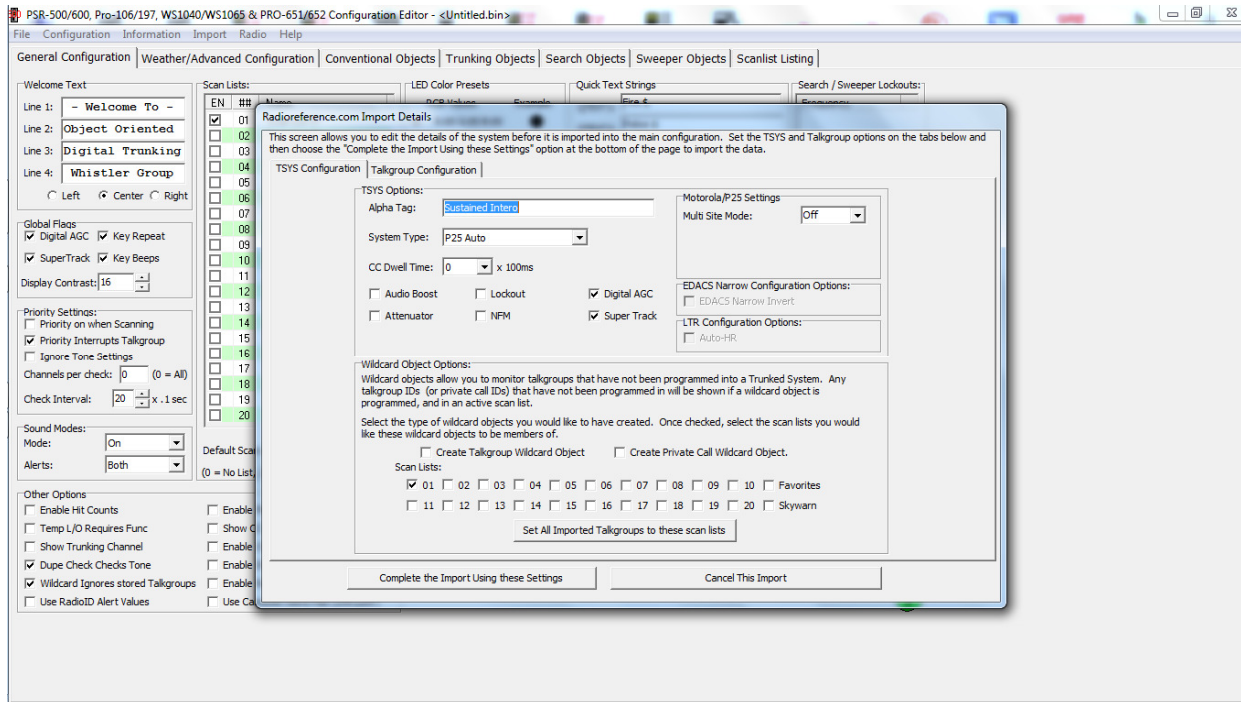
Click on the second tab "Transmitter Site Selection"; select sites near you – you must select at least one. The example above has only one site.



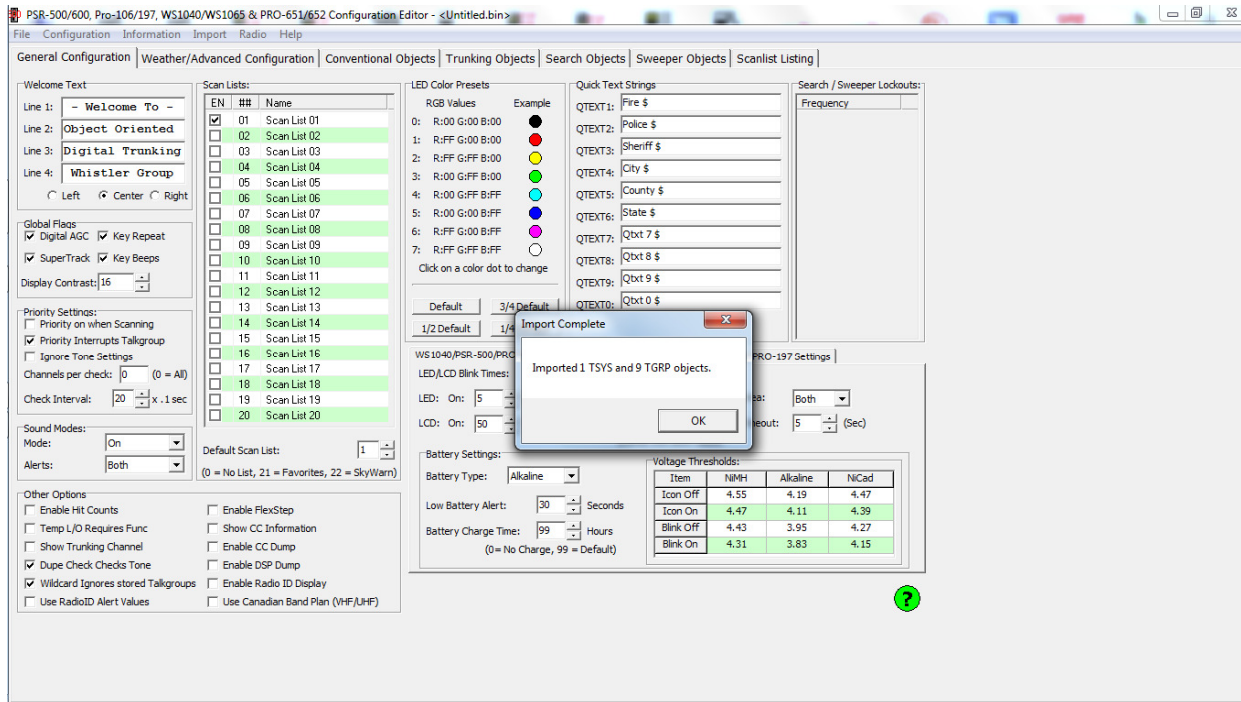
Now click the third tab "Talkgroup Selection". Agency Group box, use the pull down to select Brown County.



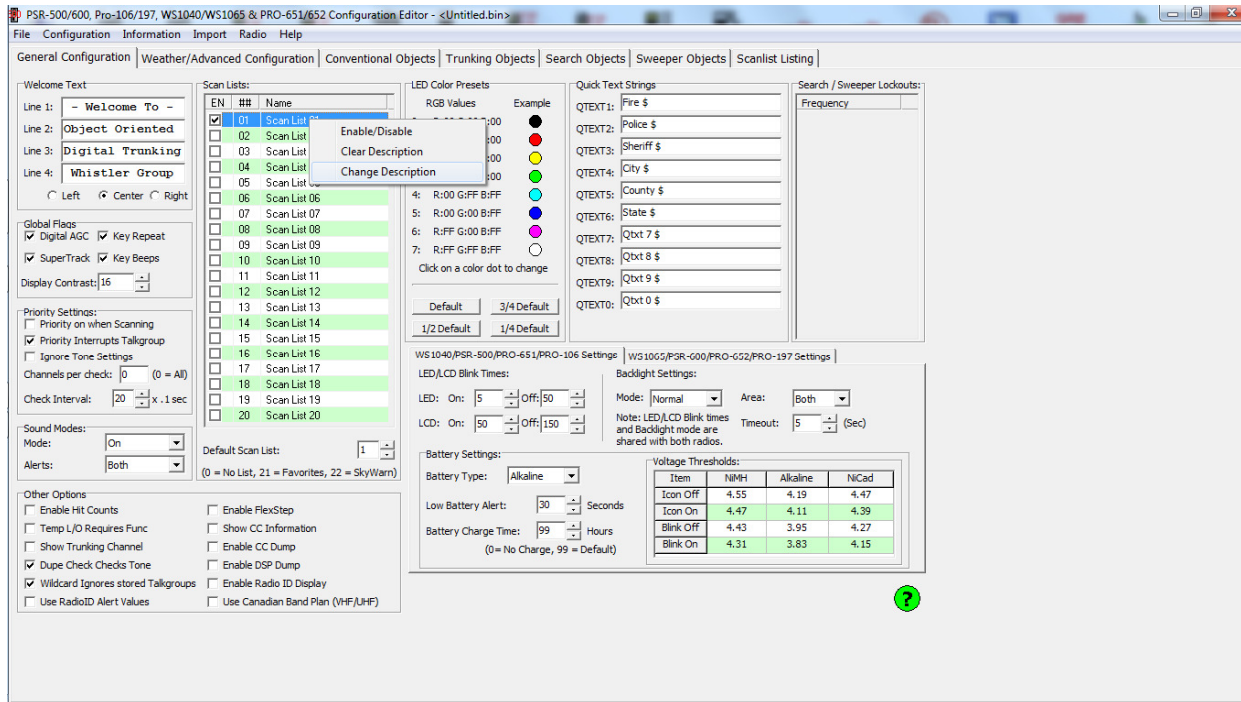
Now you can check the boxes for desired talkgroups. Remember you have 20 scanlists available so here we have selected only Brown Co Sheriff. Click on Import System (lower left).



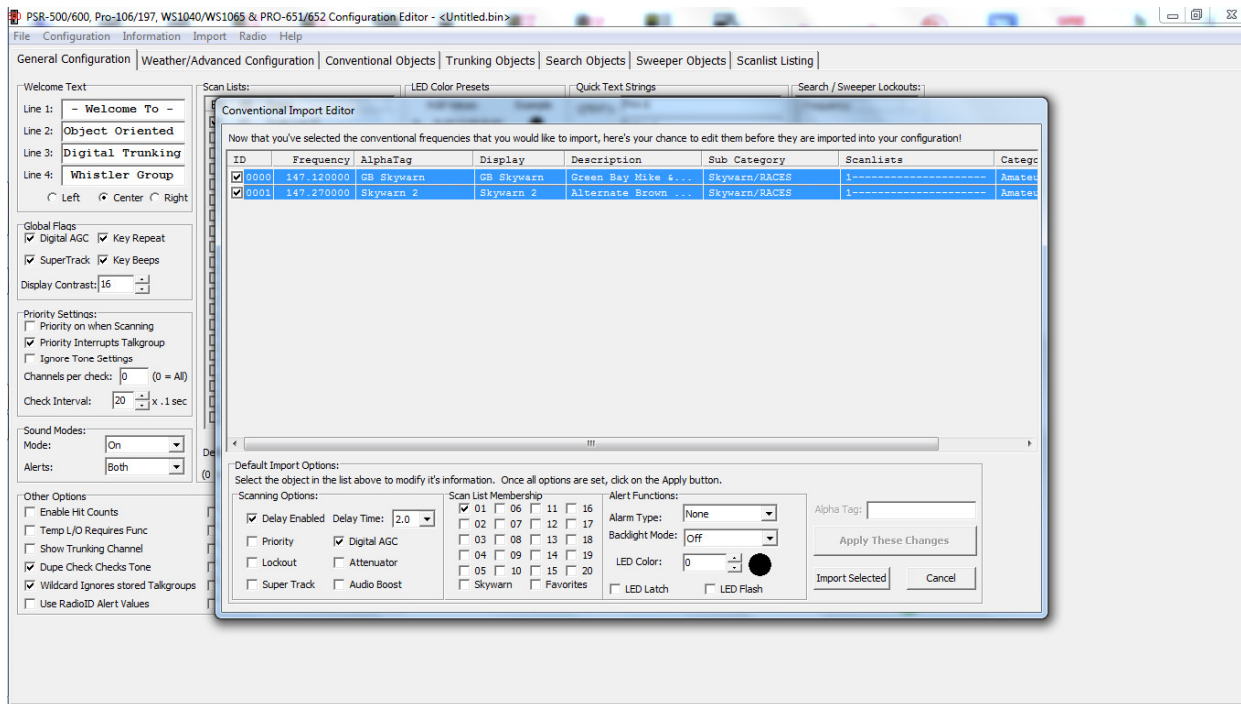
Now the system information is filled in and at the bottom you must select what scanlist these talkgroups should go into. In this case the 01 scanlist is already selected for us. Click on Set All Imported Talkgroups to these scan lists then Complete the Import Using these Settings.



The software reports the number of (scannable) objects that have been imported. Click on the OK button.



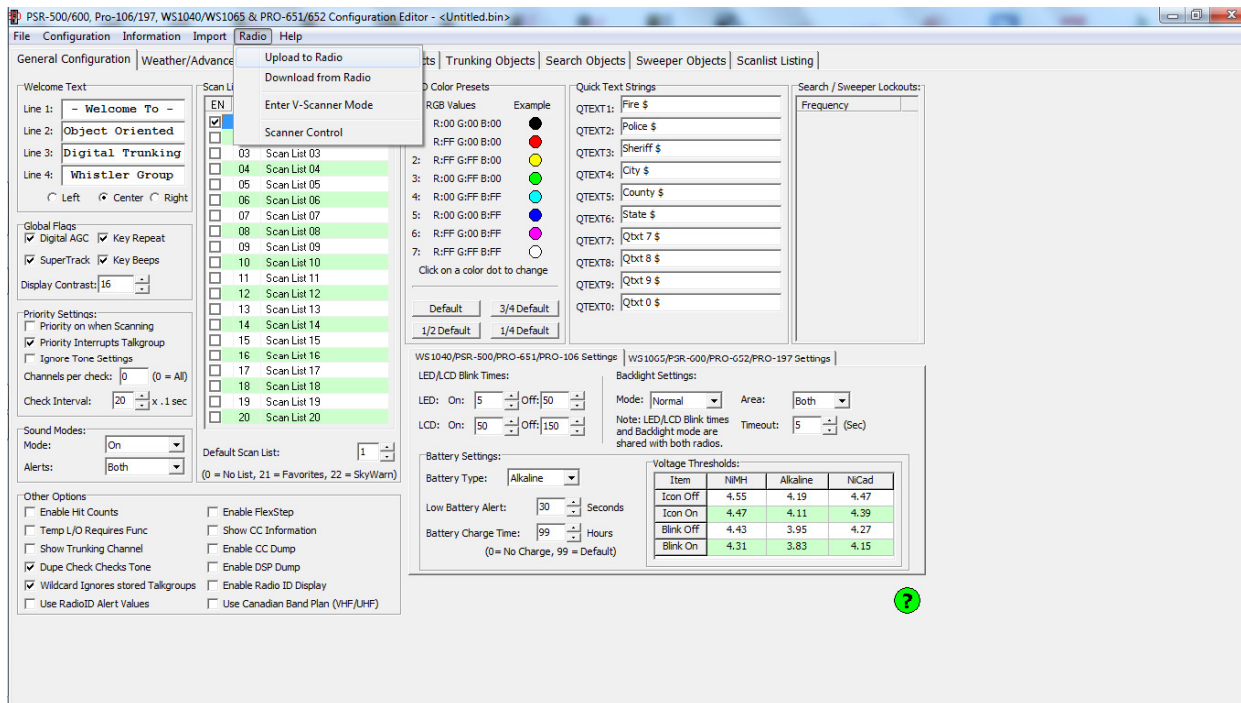
After importing, click on the General Configuration tab, right click on the scanlist you just used and click on Change Description so you can rename the scanlist. This will help you remember what is in each scanlist.



Importing Conventional Objects is the same except to set the scanlist, highlight all objects, unclick 01 and check the box of the desired scanlist. You can also set color, backlight and alert settings here. Check Apply these changes then Import Selected.

Note: Instead of using a regular scanlist for Skywarn, there is special functionality if you add Skywarn objects to the SW scanlist. Objects can belong to more than one scanlist.

Repeat this procedure until you have your scanner programmed for everything you want. Don't forget Careflight if you have one and Skywarn. Finally, it's time to upload to your WS1040 or WS1065 scanner.



Turn your scanner on and plug in the PC/IF cable into the scanner's PC/IF jack. Click on Radio, then the option "Upload to Scanner". A pop up warning message will be shown that this will overwrite anything on the scanner. Accept the upload by clicking on Yes and the upload completes very quickly. When complete, unplug the scanner and press SCAN. All enabled scanlists will be scanned. Toggle scanlists on or off by pressing the number of the scanlist while in the scan mode. For example, press 4 to toggle scanlist 4 on or off. Press Func button then a number (1 to 0) to turn scanlists 11-20 on or off.